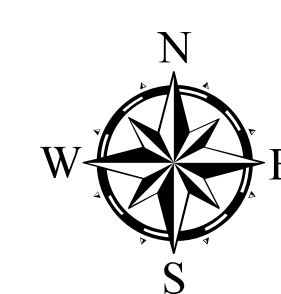
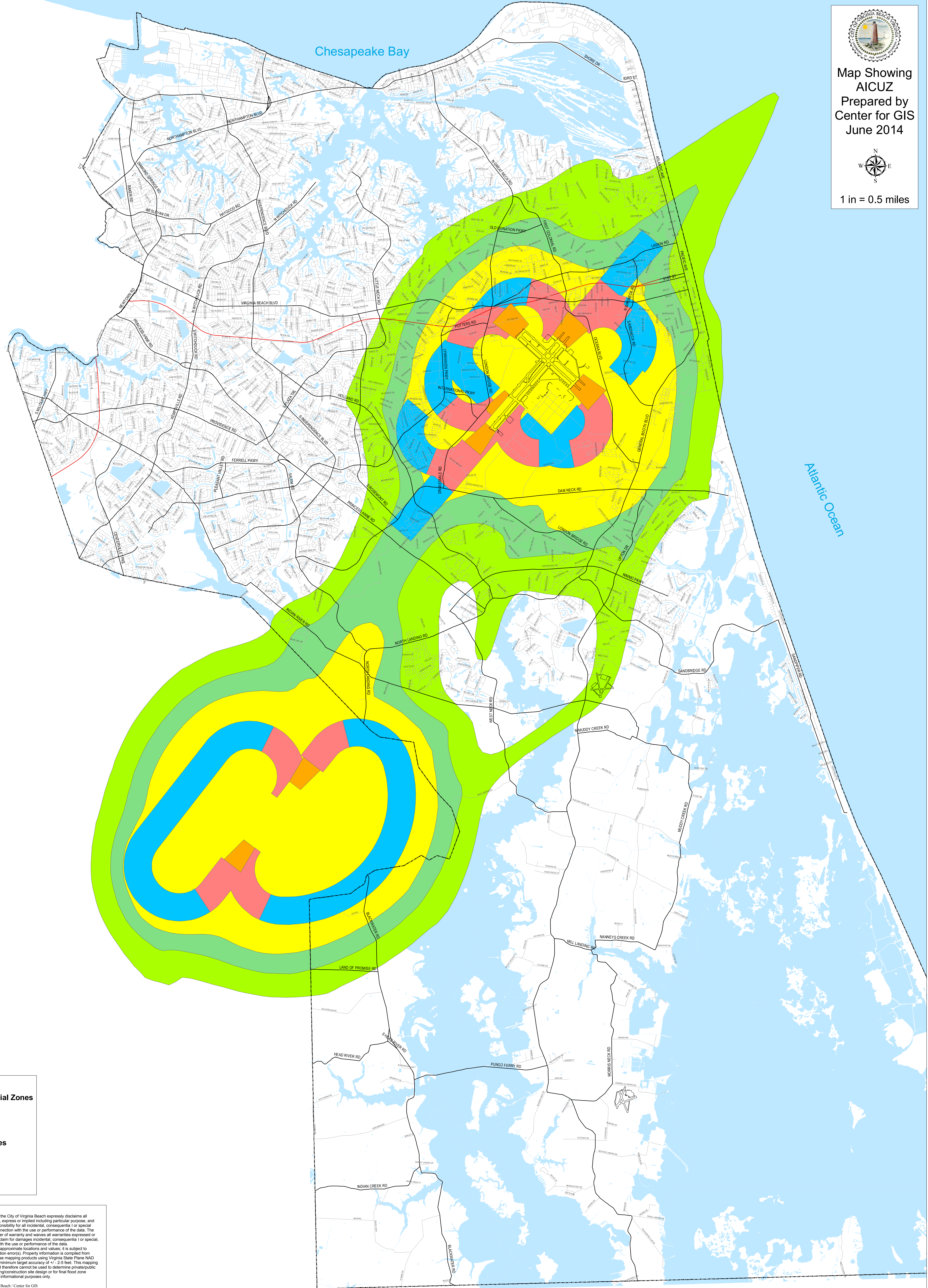




Map Showing  
AICUZ  
Prepared by  
Center for GIS  
June 2014



1 in = 0.5 miles



**Legend**

**Accident Potential Zones**

- Zone I
- Zone II
- Clear Zone

**1999 Noise Zones**

- 65-70 dBs
- 70-75 dBs
- 75-80 dBs

City Line

**DISCLAIMER:**  
The data is provided "as is" and the City of Virginia Beach expressly disclaims all warranties, LLCs, and otherwise, express or implied including particular purpose, and further expressly disclaims responsibility for all incidental, consequential or special damages arising out of or in connection with the use or performance of the data. The user acknowledges the disclaimer of warranty and waives all warranties expressed or implied and waives any right of claim for damages incidental, consequential or special, arising out of or in connection with the use or performance of the data.

**CAUTION:** This map represents approximate locations and values; it is subject to mapping projection and compilation errors. Property information is compiled from recorded plats and best fit to base mapping products using Virginia State Plane NAD 1983 coordinate system with a minimum target accuracy of +/- 2.5 feet. This mapping product is not a legal survey and therefore cannot be used to determine private/public property locations, for engineering/construction site design or for final flood zone determinations. This map is for informational purposes only.

Copyright © 2014 City of Virginia Beach / Center for GIS